

Amending the following sections by adding “Projecting Business Storefront Sign” to the table of permitted signs. The amendments listed in sections 2, 7, 9, 11, and 12 are minor grammatical fixes, such as correcting alphabetical order.

- Section 1: 21A.46.080.C.3: RB, RO
- Section 2: 21A.46.090.A.3: R-MU-35, R-MU-45, R-MU and MU
- Section 3: 21A.46.090.A.4: CN
- Section 4: 21A.46.090.A.5: CB
- Section 5: 21A.46.090.B.4: CS
- Section 6: 21A.46.090.C.3: CC
- Section 7: 21A.46.090.D.3: CSHBD
- Section 8: 21A.46.090.D.4: CG
- Section 9: 21A.46.096.B.7-8: FB
- Section 10: 21A.46.100.A.3: M-1, M-2
- Section 11: 21A.46.110.A3.a: D-1 and D-4
- Section 12: 21A.46.110.A.3.c: Live Performance Theatre and Ancillary Uses
- Section 13: 21A.46.110.B.3: D-2
- Section 14: 21A.46.110.C.3: D-3

Section 1: Amending 21A.46.080.C by adding “Projecting Business Storefront Sign” to the table of permitted signs.

C. Sign Regulations For The RB And RO Districts:

1. Purpose: The purpose of sign regulations for the RB and RO districts is to establish standards that allow for modest commercial signage while protecting the predominant residential character of these districts.
2. Applicability: Regulations in subsections C3 and C5 of this section, respectively, shall apply to all uses within the RB and RO districts. These regulations apply to each lot, regardless of the number of buildings on a lot.
3. Sign Type, Size And Height Regulations:

STANDARDS FOR THE RB DISTRICT

Type Of Signs Permitted	Maximum Area Per Sign Face	Maximum Height Of Freestanding Signs¹	Minimum Setback	Number Of Signs Permitted Per Sign Type
Awning sign/ canopy sign	10 square feet (sign area only)	See note 1	May extend 6 feet from face of building, but shall not extend	1 per first floor door/window

			across a property line	
Canopy, drive-through	40% of canopy face if signage is on 2 faces. 20% of canopy face if signs are on 4 faces	See note 1	n/a	1 per canopy face
Construction sign	32 square feet	4 feet	5 feet	1 per street frontage
Development entry sign ²	50 square feet	8 feet	10 feet	1 per entry; 2 maximum
Flat sign ³	20 square feet	See note 1	n/a	1 per lot
Garage/yard sale sign	6 square feet	4 feet	5 feet	1 per street frontage
Monument sign ²	24 square feet	4 feet	5 feet	1 per lot
Nameplate	2 square feet	See note 1	n/a	1 per building entry
New development sign	80 square feet	10 feet	10 feet	1 per street frontage
Political sign	16 square feet	4 feet	5 feet	No limit
Private directional sign	8 square feet	4 feet	5 feet	No limit
<u>Projecting Business Storefront Sign</u>	<u>6 square feet per sign side; total of 12 square feet</u>	<u>NA</u>	<u>May extend 4 feet from face of the building but no closer than 2 feet to the back of curb. Minimum height of 8 feet above sidewalk.⁵</u>	<u>1 per leasable space or entry.</u>

Public safety sign	8 square feet	6 feet	5 feet	No limit
Real estate sign	8 square feet	4 feet	5 feet	1 per street frontage
Window sign	6 square feet	See note 1	n/a	No limit

Notes:

1. For height limits on building signs, see subsection [21A.46.070J](#) of this chapter.
2. Monument signs shall have a 5 foot setback unless integrated into the fence structure. Height requirements for fence apply.
3. Backlit awnings excluded.
4. Illumination: Illuminated signs in the RB district shall be limited to development entry signs, flat signs, window signs and monument signs.
5. Public property lease and insurance required for projection over property line.

5. Sign Type, Size And Height Regulations For The RO District:

STANDARDS FOR THE RO DISTRICT

To view STANDARDS FOR THE RO DISTRICT in PDF, click [HERE](#).

Type Of Signs Permitted	Maximum Area Per Sign Face	Maximum Height Of Freestanding Signs ¹	Minimum Setback	Number Of Signs Permitted Per Sign Type
Awning sign/ canopy sign	10 square feet (sign area only)	See note 1	May extend 6 feet from face of building, but shall not extend across a property line	1 per first floor door/window
Construction sign	32 square feet	4 feet	5 feet	1 per street frontage
Development entry sign ²	50 square feet	8 feet	10 feet	1 per entry; 2 maximum
Flat sign ^{3,4}	6 square feet for each 50 feet of building frontage or major	See note 1	n/a	1 per street frontage

	portion thereof			
Garage/yard sale sign	6 square feet	4 feet	5 feet	1 per street frontage
Monument sign ²	32 square feet	4 feet	5 feet	1 per street frontage
Nameplate	2 square feet	See note 1	n/a	1 per building entry
New development sign	80 square feet	10 feet	10 feet	1 per street frontage
Political sign	16 square feet	4 feet	5 feet	No limit
Private directional sign	8 square feet	4 feet	5 feet	No limit
<u>Projecting Business Storefront Sign</u>	<u>6 square feet per sign side; total of 12 square feet</u>	<u>NA</u>	<u>May extend 4 feet from face of the building but no closer than 2 feet to the back of curb. Minimum height of 8 feet above sidewalk.⁵</u>	<u>1 per leasable space or entry.</u>
Public safety sign	8 square feet	6 feet	5 feet	No limit
Real estate sign	16 square feet	6 feet	5 feet	1 per street frontage
Window sign	6 square feet	See note 1	n/a	No limit

Notes:

1. For height limits on building signs, see subsection [21A.46.070J](#) of this chapter.
2. Monument signs shall have a 5 foot setback unless integrated into the fence structure. Height requirements for fence apply.
3. Storefront flat signs limited to locations on the lower 2 floors.
4. Backlit awnings excluded.
5. Public property lease and insurance required for projection over property line.

Section 2: Amending 21A.46.090.A.4 by removing “Monument and pole signs” to the table of permitted signs.

3. Sign Type, Size And Height Standards For The R-MU-35, R-MU-45, R-MU And MU Districts:

STANDARDS FOR THE R-MU-35, R-MU-45, R-MU AND MU DISTRICTS

To view STANDARDS FOR THE R-MU-35, R-MU-45, R-MU AND MU DISTRICTS in PDF, click [HERE](#).

Types Of Signs Permitted	Maximum Area Per Sign Face	Maximum Height Of Freestanding Signs¹	Minimum Setback²	Number Of Signs Permitted Per Sign Type	Limit On Combined Number Of Signs⁴
Awning sign/ canopy sign	1 square foot per linear foot of storefront; building total not to exceed 40 square feet (sign area only)	See note 1	May extend 6 feet from face of building 2 feet from back of curb ⁶	1 per first floor door/window	None
Canopy, drive-through	40% of canopy face if signage is on 2 faces. 20% of canopy face if signs are on 4 faces	See note 1	n/a	1 per canopy face	None
Construction sign	32 square feet	8 feet	5 feet	1 per street frontage	None
Flat sign (general building orientation) ⁸	1 square foot per linear foot of building frontage ⁵	See note 1	n/a	1 sign per building frontage	None
Flat sign (storefront orientation) ^{7,8}	1 square foot per linear foot of store frontage ⁵	See note 1	n/a	1 per business or storefront	None
Garage/yard sale sign	6 square feet	4 feet	5 feet	1 per street frontage	None

Monument and pole signs:					
Monument sign ³	100 square feet	12 feet	5 feet	1 per street frontage	1 sign per street frontage
Pole sign (1 acre minimum)	75 square feet	25 feet	15 feet and a 6 foot maximum projection	1 per street frontage	
Nameplate	2 square feet	See note 1	n/a	1 per building entry	None
New development sign	80 square feet	10 feet	5 feet	1 per street frontage	None
<u>Pole sign (1 acre minimum)</u>	<u>75 square feet</u>	<u>25 feet</u>	<u>15 feet and a 6 foot maximum projection</u>	<u>1 per street frontage</u>	<u>1 sign per street frontage</u>
Political sign	16 square feet	6 feet	5 feet	No limit	None
Private directional sign	8 square feet	4 feet	5 feet	No limit	None
Projecting business storefront sign	6 square feet per sign side, total of 12 square feet	See note 1	May extend 4 feet from face of the building and 2 feet from back of curb. <u>but no closer than 2 feet to the back of curb.</u> A minimum height of at least <u>8</u> feet above the sidewalk shall be maintained. See note 6	1 per leasable space. All signs shall be located within the tenant's leasable space	None
Public safety sign	8 square feet	6 feet	5 feet	No limit	None
Real estate sign	16 square feet	6 feet	5 feet	1 per street frontage	None
Window sign	25% of window area of each use	See note 1	n/a	No limit	None

Notes:

1. For height limits on building signs, see subsection 21A.46.070J of this chapter.
2. Not applicable to temporary signs mounted as flat signs.
3. Monument signs shall have a 5 foot setback, unless integrated into the fence structure. Height requirements for fence apply.
4. The total number of signs permitted from the sign types combined.
5. A single-tenant building may combine the square footage total of both the storefront orientation and the general building orientation flat signs to construct 1 larger sign.
6. Public property lease and insurance required for projection over property line.
7. Storefront flat signs limited to locations on the lower 2 floors.
8. Backlit awnings excluded.

Section 3: Amending 21A.46.090.A.4 by adding “Projecting Business Storefront Sign” to the table of permitted signs.

4. Sign Type, Size And Height Standards For The CN District:

STANDARDS FOR THE CN DISTRICT

Types Of Signs Permitted	Maximum Area Per Sign Face	Maximum Height Of Freestanding Signs¹	Minimum Setback²	Number Of Signs Permitted Per Sign Type	Limit On Combined Number Of Signs³
Awning sign/ canopy sign	1 square foot per linear foot of storefront; building total not to exceed 40 square feet (sign area only)	See note 1	May extend 6 feet from face of building, but shall not extend across a property line	1 per first floor door/window	None
Canopy, drive-through	40% of canopy face if signage is on 2 faces. 20% of canopy	See note 1	n/a	1 per canopy face	None

	face if signs are on 4 faces				
Construction sign	32 square feet	8 feet	5 feet	2 per building	None
Flat sign (storefront orientation) ⁵	1 square foot per linear foot of store frontage ⁴	See note 1	n/a	1 per business or storefront	None
Monument sign	75 square feet	5 feet	5 feet	1 per street frontage	None
Nameplate	2 square feet	See note 1	n/a	1 per building entry	None
New development sign	80 square feet	10 feet	5 feet	1 per development	None
Political sign	16 square feet	6 feet	5 feet	No limit	None
Private directional sign	8 square feet	4 feet	5 feet	No limit	None
<u>Projecting Business Storefront Sign</u>	<u>6 square feet per sign side; total of 12 square feet</u>	<u>NA</u>	<u>May extend 4 feet from face of the building but no closer than 2 feet to the back of curb. Minimum height of 8 feet above sidewalk.⁶</u>	<u>1 per leasable space or entry.</u>	<u>None</u>
Public safety sign	8 square feet	6 feet	5 feet	No limit	None
Real estate sign	16 square feet	6 feet	5 feet	1 per street frontage	None
Wall or flat sign (general building orientation)	1 square foot per linear foot of building frontage ⁴	See note 1	n/a	1 per building frontage	None

Window sign	25% of window area of each use	See note 1	n/a	No limit	None
-------------	--------------------------------	------------	-----	----------	------

Notes:

1. For height limits on building signs, see subsection 21A.46.070J of this chapter.
2. Not applicable to temporary signs mounted as flat signs.
3. The total number of signs permitted from the sign types combined.
4. A single-tenant building may combine the square footage total of both the storefront orientation and the general building orientation flat signs to construct 1 larger sign.
5. Storefront flat signs limited to locations on the lower 2 floors.
6. Public property lease and insurance required for projection over property line.

Section 4: Amending 21A.46.090.A.5 by adding “Projecting Business Storefront Sign” to the table of permitted signs.

5. Sign Type, Size And Height Standards For The CB District:

STANDARDS FOR THE CB DISTRICT

Types Of Signs Permitted	Maximum Area Per Sign Face	Maximum Height Of Freestanding Signs¹	Minimum Setback²	Number Of Signs Permitted Per Sign Type	Limit On Combined Number Of Signs⁴
Awning sign/ canopy sign	1 square foot per linear foot of storefront; building total not to exceed 40 square feet (sign area only)	See note 1	May extend 6 feet from face of building ⁶	1 per first floor door/window	None
Canopy, drive-through	40% of canopy face if signage is on 2 faces. 20% of canopy face if signs are on 4 faces	See note 1	n/a	1 per canopy face	1 per street frontage

Construction sign	32 square feet	8 feet	5 feet	2 per building	None
Flat sign (storefront orientation) ⁷	1 square foot per linear foot of store frontage ⁵	See note 1	n/a	1 per business or storefront	None
Monument and pole signs:					
Monument sign ³	100 square feet	6 feet 12 feet 20 feet (1 acre minimum)	5 feet 10 feet 10 feet	1 per street frontage	1 per street frontage
— Pole sign ³ (1 acre minimum)	75 square feet for a single business. 100 square feet for multiple businesses	25 feet	15 feet and a maximum 6 foot projection	1 per street frontage	
Nameplate	2 square feet	See note 1	n/a	1 per building entry	None
New development sign	80 square feet	10 feet	5 feet	1 per development	None
<u>Pole sign³ (1 acre minimum)</u>	<u>75 square feet for a single business. 100 square feet for multiple businesses</u>	<u>25 feet</u>	<u>15 feet and a maximum 6 foot projection</u>	<u>1 per street frontage</u>	<u>1 per street frontage</u>
Political sign	16 square feet	6 feet	5 feet	No limit	None
Private directional sign	8 square feet	4 feet	5 feet	No limit	None
<u>Projecting Business Storefront Sign</u>	<u>6 square feet per sign side; total of 12 square feet</u>	<u>NA</u>	<u>May extend 4 feet from face of the building but no closer than 2 feet to the</u>	<u>1 per leasable space or entry.</u>	<u>None</u>

			<u>back of curb. Minimum height of 8 feet above sidewalk.⁶</u>		
Public safety sign	8 square feet	6 feet	5 feet	No limit	None
Real estate sign	16 square feet	6 feet	5 feet	1 per street frontage	None
Wall or flat sign (general building orientation)	1 square foot per linear foot of building frontage ⁵	See note 1	n/a	1 sign per building frontage	None
Window sign	25% of window area of each use	See note 1	n/a	No limit	None

Notes:

1. For height limits on building signs, see subsection 21A.46.070J of this chapter.
2. Not applicable to temporary signs mounted as flat signs.
3. Pole and monument signs shall be permitted only when located in or adjacent to a required landscaped setback.
4. The total number of signs permitted from the sign types combined.
5. A single-tenant building may combine the square footage total of both the storefront orientation and the general building orientation flat signs to construct 1 larger sign.
6. Public property lease and insurance required for projection over property line.
7. Storefront flat signs limited to locations on the lower 2 floors.

Section 5: Amending 21A.46.090.B.4 by adding “Projecting Business Storefront Sign” to the table of permitted signs.

4. Sign Type, Size And Height Standards:

STANDARDS FOR THE CS DISTRICT

To view STANDARDS FOR THE CS DISTRICT in PDF, click [HERE](#).

Types Of Signs Permitted	Maximum Area Per Sign Face	Maximum Height Of Freestanding Signs¹	Minimum Setback⁴	Number Of Signs Permitted Per Sign Type	Limit On Combined Number Of Signs³
---------------------------------	-----------------------------------	---	------------------------------------	--	--

Awning sign/ canopy sign	1 square foot per linear foot of storefront; building total not to exceed 40 square feet (sign area only)	See note 1	May extend 6 feet from face of building, but shall not extend across a property line	1 per first floor door/ window	None
Canopy, drive- through	40% of canopy face if signage is on 2 faces. 20% of canopy face if signs are on 4 faces	See note 1	n/a	1 per canopy face	None
Construction sign	64 square feet	12 feet	10 feet	2 per building	None
Flat sign (storefront orientation) ⁶	1 square foot per linear foot of store frontage ⁵	See note 1	n/a	1 per business or storefront	None
Monument and pole signs:					
Monument sign ²	100 square feet	12 feet 6 feet	10 feet 5 feet	1 per pad site	1 per pad site
Pole sign ²	75 square feet	25 feet	At the approved landscape setback with a 6 foot projection, but shall not extend across a property line	1 per pad site	
Nameplate	2 square feet	See note 1	n/a	1 per building entry	None
New development sign	200 square feet per sign	12 feet	10 feet	1 per street frontage	None

<u>Pole sign</u> ²	<u>75 square feet</u>	<u>25 feet</u>	<u>At the approved landscape setback with a 6 foot projection, but shall not extend across a property line</u>	<u>1 per pad site</u>	
Political sign	32 square feet	8 feet	10 feet	No limit	None
Private directional sign	8 square feet	4 feet	5 feet	No limit	None
<u>Projecting Business Storefront Sign</u>	<u>6 square feet per sign side; total of 12 square feet</u>	<u>NA</u>	<u>May extend 4 feet from face of the building but no closer than 2 feet to the back of curb. Minimum height of 8 feet above sidewalk.</u> ⁷	<u>1 per leasable space or entry.</u>	<u>None</u>
Public safety sign	8 square feet	6 feet	10 feet	No limit	None
Real estate sign	64 square feet	12 feet	10 feet	1 per building	None
Shopping center identification sign	200 square feet	25 feet	10 feet	1 per street frontage	None
Wall or flat sign (general building orientation)	1 square foot per linear foot of building frontage ⁵	See note 1	n/a	1 per building frontage	None
Window sign	25% of total frontage	See note 1	n/a	No limit	None

	window area per floor				
--	-----------------------	--	--	--	--

Notes:

1. For height limits on building signs, see subsection [21A.46.070J](#) of this chapter.
 2. Permitted only for freestanding buildings within shopping centers.
 3. The total number of signs permitted from the sign types combined.
 4. Not applicable to temporary signs mounted as flat signs.
 5. A single-tenant building may combine the square footage total of both the storefront orientation and the general building orientation flat signs to construct 1 larger sign.
 6. Storefront flat signs limited to locations on the lower 2 floors.
 7. Public property lease and insurance required for projection over property line.
5. Supplementary Regulations:
- a. Sign Structures: Structures supporting monument and shopping center identification signs shall be compatible with exterior materials used in building exteriors within the shopping center.
 - b. Landscape: Freestanding signs shall be located within landscaped areas not less than two hundred (200) square feet in size. Planting within such landscaped areas shall be approved by the zoning administrator.
 - c. Items Of Information: Shopping center identification signs shall be limited to the name of the shopping center and the names of tenants or businesses located in the shopping center.

Section 6: Amending 21A.46.090.C.3 by adding “Projecting Business Storefront Sign” to the table of permitted signs.

3. Sign Type, Size And Height Standards:

STANDARDS FOR THE CC DISTRICT

To view STANDARDS FOR THE CC DISTRICT in PDF, click [HERE](#).

Types Of Signs Permitted Per Use	Maximum Area Per Sign Face	Maximum Height Of Freestanding Signs¹	Minimum Setback²	Number Of Signs Permitted Per Sign Type	Limit On Combined Number Of Signs³
---	-----------------------------------	---	------------------------------------	--	--

Awnings/canopy signs	1 square foot per linear foot of storefront; building total not to exceed 40 square feet (sign area only)	See note 1	10 feet	1 per first floor door/window	None
Canopy, drive-through	40% of canopy face if signage is on 2 faces. 20% of canopy face if signs are on 4 faces	See note 1	n/a	1 per canopy face	None
Construction sign	64 square feet	12 feet	5 feet	1 per street frontage	None
Flat sign (storefront orientation) ⁶	1.5 square feet per linear foot of store frontage ⁵	See note 1	n/a	1 per business or storefront	None
Monument and pole signs:					
Monument sign ⁴	100 square feet	6 feet 12 feet 20 feet (1 acre minimum)	None 5 feet	1 per street frontage	1 per street frontage
Pole sign ⁴	75 square feet for a single business, 100 square feet for multiple businesses	25 feet	15 feet and a maximum 6 foot projection	1 per street frontage	1 per street frontage
Nameplate	2 square feet	See note 1	n/a	1 per building entry	None

New development sign	80 square feet	12 feet	5 feet	1 per development	None
<u>Pole sign</u> ⁴	<u>75 square feet for a single business, 100 square feet for multiple businesses</u>	<u>25 feet</u>	<u>15 feet and a maximum 6 foot projection</u>	<u>1 per street frontage</u>	<u>1 Per street frontage</u>
Political sign	32 square feet	8 feet	5 feet	No limit	None
Private directional sign	8 square feet	4 feet	5 feet	No limit	None
<u>Projecting Business Storefront Sign</u>	<u>6 square feet per sign side; total of 12 square feet</u>	<u>NA</u>	<u>May extend 4 feet from face of the building but no closer than 2 feet to the back of curb. Minimum height of 8 feet above sidewalk.</u> ⁷	<u>1 per leasable space or entry.</u>	<u>None</u>
Public safety sign	8 square feet	6 feet	5 feet	No limit	None
Real estate sign	64 square feet	12 feet	5 feet	1 per street frontage	None
Wall or flat sign (general building orientation)	1 square foot per linear foot of building frontage ⁵	See note 1	n/a	1 per building frontage	None
Window sign	25% of total frontage window area per use	See note 1	n/a	No limit	None

Notes:

1. For height limits on building signs, see subsection [21A.46.070J](#) of this chapter.
2. Not applicable to temporary signs mounted as flat signs.
3. The total number of signs permitted from the sign types combined.
4. See subsection C4a of this section.
5. A single-tenant building may combine the square footage total of both the storefront orientation and the general building orientation flat signs to construct 1 larger sign.
6. Storefront flat signs limited to locations on the lower 2 floors.
7. Public property lease and insurance required for projection over property line.

4. Supplementary Regulations:

a. Lot Frontage Requirements: A minimum lot frontage of one hundred feet (100') shall be required for pole signs or monument signs.

Section 7: Amending 21A.46.090.D.3 by changing “10 feet” to “8 feet” to the table of permitted signs.

3. Sign Type, Size And Height Standards:

STANDARDS FOR THE CSHBD DISTRICT

To view STANDARDS FOR THE CSHBD DISTRICT in PDF, click [HERE](#).

Types Of Signs Permitted	Maximum Area Per Sign Face	Maximum Height Of Freestanding Signs ¹	Minimum Setback ²	Number Of Signs Permitted Per Sign Type
Types Of Signs Permitted	Maximum Area Per Sign Face	Maximum Height Of Freestanding Signs ¹	Minimum Setback ²	Number Of Signs Permitted Per Sign Type
Awning/canopy signs	1 square foot per linear foot of storefront (sign area only)	See note 1	May extend 6 feet from face of building 2 feet from back of curb ⁵	1 per first floor door/window
Canopy, drive-through	40% of canopy face if signage is on 2 faces. 20% of canopy face if signs are on 4 faces	See note 1	n/a	1 per canopy face

Construction sign	64 square feet	12 feet	None	1 per street frontage
Flat sign (storefront orientation) ⁶	2 square feet per linear foot of store frontage ⁴	See note 1	n/a	1 per business or storefront
Marquee sign	1 square foot per linear foot of store frontage	See note 1	See subsection 21A.46.070 O of this chapter	1 per storefront
Monument sign ³	100 square feet	20 feet	None	1 per street frontage
Nameplate	2 square feet	See note 1	n/a	1 per building entry
New development sign	80 square feet	12 feet	None	1 per development
Pole sign ³	75 square feet for a single business, 100 square feet for multiple businesses	25 feet	No extension across a property line is permitted	1 per street frontage
Political sign	32 square feet	8 feet	None	No limit
Private directional sign	21 square feet	7 feet	None	No limit
Projecting building sign	0.5 square foot per linear foot of street frontage; not to exceed 40 square feet	See note 1	May extend 6 feet from face of building, but shall not cross a property line	1 per street frontage
Projecting business storefront sign	6 square feet per sign side, total of 12 square feet	See note 1	May extend 4 feet from face of a building and 2 feet from back of curb ⁵ . A minimum height of 4 8 feet above the sidewalk shall be maintained	1 per leasable space. Leasable spaces on corners may have 2. All signs shall be located within the tenant's leasable area and not on any other tenant's leasable space

Public safety sign	8 square feet	6 feet	None	No limit
Real estate sign	64 square feet	12 feet	None	1 per street frontage
Wall sign or flat sign (general building orientation)	1 square foot per linear foot of building face ⁴	See note 1	n/a	1 per building face
Window sign	25% of total frontage window area per use	See note 1	n/a	No limit

Notes:

1. For height limits on building signs, see subsection 21A.46.070J of this chapter.
2. Not applicable to temporary signs mounted as flat signs.
3. See subsection D6a of this section.
4. A single-tenant building may combine the square footage total of both the storefront orientation and the general building orientation flat signs to construct 1 larger sign.
5. Public property lease and insurance required for projection over property line.
6. Storefront flat signs limited to locations on the lower 2 floors.

Section 8: Amending 21A.46.090.D.4 by adding “Projecting Business Storefront Sign” to the table of permitted signs.

4. Sign Type, Size And Height Standards:

STANDARDS FOR THE CG DISTRICT

To view STANDARDS FOR THE CG DISTRICT in PDF, click [HERE](#).

Types Of Signs Permitted	Maximum Area Per Sign Face	Maximum Height Of Freestanding Signs ¹	Minimum Setback ²	Number Of Signs Permitted Per Sign Type
Awning/canopy signs	1 square foot per linear foot of storefront (sign area only)	See note 1	May extend 6 feet from face of building, but shall not cross a property line	1 per first floor door/window

Canopy, drive-through	40% of canopy face if signage is on 2 faces. 20% of canopy face if signs are on 4 faces	See note 1	n/a	1 per canopy face
Construction sign	64 square feet	12 feet	5 feet	1 per street frontage
Flat sign (storefront orientation) ⁵	2 square feet per linear foot of store frontage ⁴	See note 1	n/a	1 per business or storefront
Marquee sign	1 square foot per linear foot of store frontage	See note 1	See subsection 21A.46.070 O of this chapter	1 per storefront
Monument sign ³	1 square foot per linear foot of street frontage	20 feet 8 feet	4 feet None	1 per street frontage
Nameplate	2 square feet	See note 1	n/a	1 per building entry
New development sign	200 square feet	12 feet	5 feet	1 per street frontage
Pole sign ³	1 square foot per linear foot of street frontage; 200 square feet maximum for a single business, 300 square feet maximum for multiple businesses	35 feet	10 feet with a maximum 6 foot projection. No extension across a property line is permitted	1 per street frontage
Political sign	32 square feet	8 feet	5 feet	No limit
Private directional sign	8 square feet	4 feet	5 feet	No limit
<u>Projecting Business Storefront Sign</u>	<u>6 square feet per sign side; total of 12 square feet</u>	<u>NA</u>	<u>May extend 4 feet from face of the building but no closer than 2 feet to the back of curb. Minimum height of 8 feet above sidewalk.⁶</u>	<u>1 per leasable space or entry.</u>

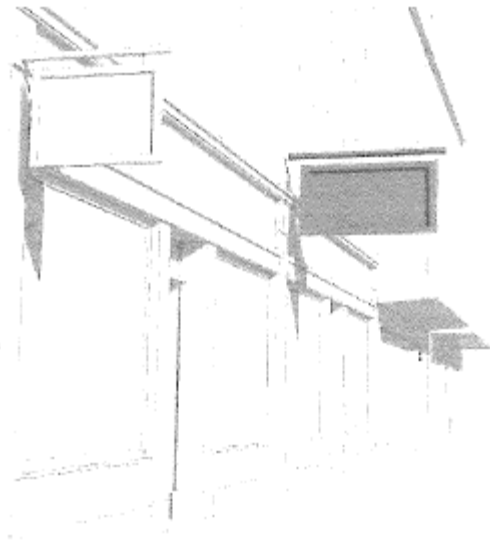
Public safety sign	8 square feet	6 feet	5 feet	No limit
Real estate sign	64 square feet	12 feet	5 feet	1 per street frontage
Sexually oriented business signs	See section 21A.36.140 of this title			
Wall sign or flat sign (general building orientation)	1 square foot per linear foot of building face ⁴	See note 1	n/a	1 per building face
Window sign	25% of total frontage window area per use	See note 1	n/a	No limit

Notes:

1. For height limits on building signs, see subsection [21A.46.070J](#) of this chapter.
2. Not applicable to temporary signs mounted as flat signs.
3. See subsection D6a of this section.
4. A single-tenant building may combine the square footage total of both the storefront orientation and the general building orientation flat signs to construct 1 larger sign.
5. Storefront flat signs limited to locations on the lower 2 floors.
6. Public property lease and insurance required for projection over property line.

Section 9: Amending 21A.46.096.B.7-8 by changing “10 feet” to “8 feet” in the table of permitted signs.

7. Projecting Sign:



Sign Type	FB-UN1	FB-UN2	FB-SC	FB-SE	Specifications	
Projecting sign		P	P	P	Quantity	1 per leasable space. Leasable spaces on corners may have 2
					Clearance	Minimum of 10 8 feet above sidewalk/walkway
					Area	6 square feet per side, 12 square feet total
					Projection	Maximum of 4 feet from building facade
					Location permitted	Private property or public street. Signs can face the special purpose corridor but must be located on private property. All signs are subject to the requirements of the revocable permitting process

8. Projecting Parking Entry Sign:

Sign Type	FB-UN1	FB-UN2	FB-SC	FB-SE	Specifications	
Projecting parking entry sign (see projecting sign graphic)			P	P	Quantity	1 per parking entry
					Clearance	Minimum of 10 8 feet above sidewalk/walkway
					Height	Maximum of 2 feet

					Area	4 square feet per side, 8 square feet total
					Projection	Maximum of 4 feet from building facade for public and private streets. Maximum of 2 feet within the special purpose corridor
					Location permitted	Private property or public street. Signs can face the special purpose corridor but must be located on private property. All signs are subject to the requirements of the revocable permitting process

Section 10: Amending 21A.46.100.A.3 by adding “Projecting Business Storefront Sign” to the table of permitted signs.

3. Sign Type, Size And Height Standards:

STANDARDS FOR THE M-1 AND M-2 DISTRICTS

Types Of Signs Permitted	Maximum Area Per Sign Face	Maximum Height Of Freestanding Signs¹	Minimum Setback²	Number Of Signs Permitted Per Sign Type	Limit On Combined Number Of Signs³
Awning/ canopy signs	1 square foot per linear foot of storefront (sign area only)	See note 1	May extend 6 feet from face of building, but shall not cross a property line	1 per first floor door/window	None
Canopy, drive-through	40% of canopy face if signage is on 2 faces; 20% of canopy face if signs are on 4 faces	See note 1	n/a	1 per canopy face	None
Construction sign	64 square feet	12 feet	10 feet	1 per street frontage	None

Development entry sign	160 square feet maximum per sign; 200 square feet total for 2 signs	10 feet	10 feet		1 per street frontage
Flat sign (storefront orientation) ⁴	2 square feet per linear foot of store frontage ⁶	See note 1	n/a	1 per business or storefront	None
Monument and pole signs:					
Monument sign ⁵	150 square feet	5 feet at the minimum setback and increases 1 foot for each additional 1 foot of setback for a maximum of 20 feet	5 feet	1 per street frontage	1 sign per street frontage
Pole sign ⁵	1 square foot per linear foot of street frontage; 200 square feet maximum for a single business, 300 square feet maximum for multiple businesses	25 feet	15 feet	1 per street frontage	1 sign per street frontage
New development sign	160 square feet per sign; 200 square feet total	12 feet	10 feet	1 per street frontage	None
Pole sign ⁵	1 square foot per linear foot of street frontage; 200	25 feet	15 feet	1 per street frontage	1 sign per street frontage

	square feet maximum for a single business, 300 square feet maximum for multiple businesses				
Political sign	32 square feet	8 feet	10 feet	No limit	None
Private directional sign	8 square feet	4 feet	5 feet	No limit	None
<u>Projecting Business Storefront Sign</u>	<u>6 square feet per sign side; total of 12 square feet</u>	<u>NA</u>	<u>May extend 4 feet from face of the building but no closer than 2 feet to the back of curb. Minimum height of 8 feet above sidewalk.⁷</u>	<u>1 per leasable space or entry.</u>	<u>None</u>
Public safety sign	8 square feet	6 feet	10 feet	No limit	None
Real estate sign	64 square feet	12 feet	10 feet	1 per street frontage	None
Sexually oriented business signs	See section 21A.36.140 of this title				
Wall sign or flat sign ⁴	1.5 square feet per linear foot of each building face	See note 1	n/a	1 per building face	None
Window sign	25% of total frontage	See note 1	n/a	No limit	None

	window area per floor				
--	--------------------------	--	--	--	--

Notes:

1. For height limits on building signs, see subsection [21A.46.070J](#) of this chapter.
2. Not applicable to temporary signs mounted as flat signs.
3. The total number of signs permitted from the sign types combined.
4. Storefront flat signs limited to locations on the lower 2 floors.
5. See subsection A4a of this section.
6. A single-tenant building may combine the square footage total of both the storefront orientation and the general building orientation flat signs to construct 1 larger sign.
7. Public property lease and insurance required for projection over property line.
4. Supplementary Regulations:
 - a. Lot Frontage Requirements: A minimum lot frontage of one hundred feet (100') shall be required for pole signs or monument signs. (Ord. 17-14, 2014)

Section 11: Amending 21A.46.110.A.3.a by removing “Monument, pole, and projecting building signs” to the table of permitted signs.

3. Sign Type, Size And Height Standards:
 - a. D-1 And D-4 Districts:

STANDARDS FOR THE D-1 AND D-4 DISTRICTS

Types Of Signs Permitted	Maximum Area Per Sign Face	Maximum Height Of Freestanding Signs¹	Minimum Setback²	Number Of Signs Permitted Per Sign Type	Limit On Combined Number Of Signs³
Awning signs	1 square foot per linear foot of storefront (sign area only)	See note 1	May extend 6 feet from face of building but not within 2 feet of the back of curb ⁶	1 per first floor door/window	None

Canopy, drive-through	40% of canopy face if signage is on 2 faces; 20% of canopy face if signs are on 4 faces	See note 1	n/a	1 per canopy face	None
Canopy signs	1 square foot per linear foot of storefront (sign area only); 20 square feet maximum per canopy	See note 1	May extend from face of building but not within 2 feet of the back of curb ⁶	1 per first floor building entry	None
Construction sign	64 square feet	12 feet	5 feet	1 per storefront	None
Corporate flag	32 square feet	See subsection A4c of this section	8 feet from face of building but not within 2 feet of the back of curb ⁶	1 per 50 feet of street frontage, 50 foot minimum street frontage required	2 per street frontage
Flat sign (general building orientation)	4 square feet per linear foot of building face ⁵	See note 1	n/a	1 per building face	None
Flat sign (storefront orientation) ⁴	2 square feet per linear foot of each store frontage ⁵	See note 1	n/a	1 per business storefront	None
Marquee sign	Subject only to subsection 21A.46.070O of this chapter	See subsection 21A.46.070O of this chapter	See subsection 21A.46.070O of this chapter ⁶	1 per storefront	None
Monument, pole, and projecting		-	-		

building signs:					
Monument sign	1 square foot per linear foot of street frontage	20 feet	None	1 per street frontage	1 sign per street frontage
Pole sign	1 square foot per linear foot of street frontage; 200 square feet maximum for a single business, 300 square feet maximum for multiple businesses	45 feet	None, but shall not extend across a property line	1 per street frontage	
Projecting building sign	125 square feet per side; 250 square feet total	See note 1. (See subsection A4b of this section)	May extend 6 feet from face of building but not within 2 feet of the back of curb	1 per street frontage (See subsection A4b of this section)	
Nameplate, building	3 square feet	8 square feet	None	1 per building	None
New development sign	200 square feet	12 feet	5 feet	1 per street frontage	None
Outdoor television monitor ^{4,7}	62 square feet	See note 1. Sign face limited to 8 feet in height	None	1 per building	None
<u>Pole sign</u>	<u>1 square foot per linear foot of street frontage; 200 square feet maximum for a single</u>	<u>45 feet</u>	<u>None, but shall not extend across a property line</u>	<u>1 per street frontage</u>	<u>None</u>

	<u>business, 300 square feet maximum for multiple businesses</u>				
Political sign	32 square feet	8 feet	5 feet	No limit	None
Private directional sign	8 square feet	4 feet	5 feet	No limit	None
<u>Projecting building sign</u>	<u>125 square feet per side; 250 square feet total</u>	<u>See note 1. (See subsection A4b of this section)</u>	<u>May extend 6 feet from face of building but not within 2 feet of the back of curb⁶</u>	<u>1 per street frontage (See subsection A4b of this section)</u>	<u>None</u>
Projecting business storefront sign	9 square feet per side; 18 square feet total	See note 1. Sign face limited to 4 feet in height	May extend 4 feet from face of building but not within 2 feet of the back of curb ⁶	1 per public business entry to the street	None
Projecting parking entry sign	9 square feet; 18 square feet total	See note 1. Sign face limited to 4 feet in height	May extend 4 feet from face of building but not within 2 feet of the back of curb ⁶	1 per driveway or parking lot entry	None
Public safety sign	8 square feet	6 square feet	None	No limit	None
Real estate sign	32 square feet	8 feet	None	1 per street frontage	None
Roof signs	4 square feet per linear foot of building face or 6 square feet per	See note 1	n/a	1 per street frontage	None

	linear foot of building face on buildings taller than 100 feet				
Window sign	25% of total frontage window area per use	No limit	n/a	No limit	None

Notes:

1. For height limits on building signs, see subsection [21A.46.070J](#) of this chapter.
2. Not applicable to temporary signs mounted as flat signs.
3. The total number of signs permitted from the sign types combined.
4. Storefront flat signs and outdoor television monitors limited to locations on the lower 2 floors.
5. A single-tenant building may combine the square footage total of both the storefront orientation and the general building orientation flat signs to construct 1 larger sign.
6. Public property lease and insurance required for projection over property line.
7. Allowed in conjunction with television stations only and are allowed only if the building contains a permanent broadcast studio for the television station of at least 15,000 square feet.

Section 12: Amending 21A.46.110.A.3.c by removing “Monument, pole, and projecting building signs” to the table of permitted signs.

c. Live Performance Theater And Ancillary Uses Located In The Interior Of The Block Between State And Main Streets, Between 100 And 200 South Streets:

STANDARDS FOR THE LIVE PERFORMANCE THEATRE AND ANCILLARY USES LOCATED IN THE INTERIOR OF THE BLOCK BETWEEN STATE AND MAIN STREETS, BETWEEN 100 AND 200 SOUTH STREETS

Types Of Signs Permitted	Maximum Area Per Sign Face	Maximum Height Of Freestanding Signs ¹	Minimum Setback ²	Number Of Signs Permitted Per Sign Type	Limit On Combined Number Of Signs ³
Awning signs	1 square foot per linear foot of	See note 1	May extend 6 feet from face of building	1 per first floor door/window	None

	storefront (sign area only)		but not within 2 feet of the back of curb ⁶		
Canopy, drive-through	40% of canopy face if signage is on 2 faces; 20% of canopy face if signs are on 4 faces	See note 1	n/a	1 per canopy face	None
Canopy signs	1 square foot per linear foot of storefront (sign area only); 20 square feet maximum per canopy	See note 1	May extend from face of building but not within 2 feet of the back of curb ⁶	1 per first floor building entry	None
Construction sign	64 square feet	12 feet	5 feet	1 per storefront	None
Corporate flag	32 square feet	See subsection A4c of this section	8 feet from face of building but not within 2 feet of the back of curb ⁶	1 per 50 feet of street frontage, 50 foot minimum street frontage required	2 per street frontage
Flat sign (general building orientation)	4 square feet per linear foot of building face ⁵	See note 1	n/a	2 per building face	None
Flat sign (storefront orientation) ⁴	2 square feet per linear foot of each store frontage ⁵	See note 1	n/a	1 per business storefront	None
Marquee sign	Subject only to subsection 21A.46.070O of this chapter	See subsection 21A.46.070O of this chapter	See subsection 21A.46.070O of this chapter ⁶	1 per storefront	None
Monument, pole, and					

projecting building signs:					
Monument sign	1 square foot per linear foot of street frontage	20 feet	None	1 per street frontage	1 sign per street frontage
Pole sign	1 square foot per linear foot of street frontage; 200 square feet maximum for a single business; 300 square feet maximum for multiple businesses	45 feet	None, but shall not extend across a property line	1 per street frontage	-
Pole sign, parking garage access	1 square foot per linear foot of street frontage; 165 square feet maximum for a single business Sign may be located off premises to indicate garage access point, as deemed appropriate by Zoning Administrator	45 feet	None, but shall not extend across a property line	1 per street frontage	1
Projecting building sign ^{7,8}	165 square feet per side; 330 square feet total	See note 1	May extend 6 feet from face of building but not within 2 feet of the back of curb ⁶	2 per street frontage	-
Nameplate, building	3 square feet	8 square feet	None	1 per building	None

New development sign	200 square feet	12 feet	5 feet	1 per street frontage	None
Pole sign	<u>1 square foot per linear foot of street frontage; 200 square feet maximum for a single business, 300 square feet maximum for multiple businesses</u>	45 feet	<u>None, but shall not extend across a property line</u>	<u>1 per street frontage</u>	None
Pole sign, parking garage access	<u>1 square foot per linear foot of street frontage; 165 square feet maximum for a single business</u> <u>Sign may be located off premises to indicate garage access point, as deemed appropriate by Zoning Administrator</u>	45 feet	<u>None, but shall not extend across a property line</u>	<u>1 per street frontage</u>	<u>1</u>
Political sign	32 square feet	8 feet	5 feet	No limit	None
Private directional sign	8 square feet	4 feet	5 feet	No limit	None
Projecting building sign ^{7,8}	<u>165 square feet per side; 330 square feet total</u>	<u>See note 1</u>	<u>May extend 6 feet from face of building but not within 2 feet of the back of curb⁶</u>	<u>2 per street frontage</u>	<u>None</u>

Projecting business storefront sign ^{7,8}	9 square feet per side; 18 square feet total	See note 1. Sign face limited to 4 feet in height	May extend 7 feet from face of building but not within 2 feet of the back of curb ⁶	1 per public business entry	None
Projecting parking entry sign ^{7,8}	40 square feet; 80 square feet total	See note 1. Sign face limited to 4 feet in height	May extend 10 feet from face of building but not within 2 feet of the back of curb ⁶	1 per driveway or parking lot entry	None
Public safety sign	8 square feet	6 square feet	None	No limit	None
Real estate sign	32 square feet	8 feet	None	1 per street frontage	None
Roof signs	4 square feet per linear foot of building face or 6 square feet per linear foot of building face on buildings taller than 100 feet	See note 1	n/a	1 per street frontage	None
Window sign	25% of total frontage window area per use	No limit	n/a	No limit	None

Notes:

1. For height limits on building signs, see subsection [21A.46.070J](#) of this chapter.
2. Not applicable to temporary signs mounted as flat signs.
3. The total number of signs permitted from the sign types combined.
4. Storefront flat signs limited to locations on the lower 2 floors.
5. A single-tenant building may combine the square footage total of both the storefront orientation and the general building orientation flat signs to construct 1 larger sign.
6. Public property lease and insurance required for projection over property line.

7. This applies only to signs not placed on the street frontages of State Street, Main Streets, 100 South Street and 200 South Street. All signs of this type intended for these street frontages are to be governed by subsection A3a of this section.

8. These sign types may have animated elements as defined in subsection [21A.46.020B](#) of this chapter, restricted to the non-mechanical animation of lights and lighting.

Section 13: Amending 21A.46.110.B.3 by adding “Projecting Business Storefront Sign” to the table of permitted signs.

3. Sign Type, Size And Height Standards:

STANDARDS FOR THE D-2 DISTRICT

Types Of Signs Permitted	Maximum Area Per Sign Face	Maximum Height Of Freestanding Signs ¹	Minimum Setback ²	Number Of Signs Permitted Per Sign Type	Limit On Combined Number Of Signs ³
Awning/canopy sign	1 square foot per linear foot of storefront (sign area only)	See note 1	May extend 6 feet from face of building 2 feet from back of curb ⁷	1 per first floor door/window	None
Canopy, drive-through	40% of canopy face if signage is on 2 faces; 20% of canopy face if signs are on 4 faces	See note 1	n/a	1 per canopy face	None
Construction sign	64 square feet	12 feet	5 feet	1 per street frontage	None
Flat sign (storefront orientation) ⁴	2 square feet per linear foot of each store frontage ⁵	See note 1	n/a	1 per business or storefront	None
Monument and pole signs:					
Monument sign ⁶	1 square foot per linear foot of street frontage	20 feet	None	1 per street frontage	1 sign per street frontage

Pole sign ⁶	1 square foot per linear foot of street frontage; 200 square feet maximum for a single business, 300 square feet maximum for multiple businesses	45 feet	None, but shall not extend across a property line	1 per street frontage	1 sign per street frontage
Nameplate, building	3 square feet	8 square feet	None	1 per building	None
New development sign	200 square feet	12 feet	5 feet	1 per street frontage	None
<u>Pole sign⁶</u>	<u>1 square foot per linear foot of street frontage; 200 square feet maximum for a single business, 300 square feet maximum for multiple businesses</u>	45 feet	<u>None, but shall not extend across a property line</u>	<u>1 per street frontage</u>	<u>1 sign per street frontage</u>
Political sign	32 square feet	8 feet	5 feet	No limit	None
Private directional sign	8 square feet	4 feet	5 feet	No limit	None
Projecting building sign	0.5 square foot per linear foot of street frontage; not to exceed 40 square feet	See note 1	May extend 6 feet from face of building, but shall not cross a property line	1 per street frontage	None

<u>Projecting Business Storefront Sign</u>	<u>6 square feet per sign side; total of 12 square feet</u>	<u>NA</u>	<u>May extend 4 feet from face of the building but no closer than 2 feet to the back of curb. Minimum height of 8 feet above sidewalk.⁷</u>	<u>1 per leasable space or entry.</u>	<u>None</u>
Public safety sign	8 square feet	6 feet	5 feet	No limit	None
Real estate sign	64 square feet	12 feet	5 feet	1 per street frontage	None
Wall sign or flat sign (general building orientation)	4 square feet per linear foot of building face ⁵	See note 1	n/a	1 per building face	None
Window sign	25% of total frontage window area per use	See note 1	n/a	No limit	n/a

Notes:

1. For height limits on building signs, see subsection [21A.46.070J](#) of this chapter.
 2. Not applicable to temporary signs mounted as flat signs.
 3. The total number of signs permitted from the sign types combined.
 4. Storefront flat signs limited to locations on the lower 2 floors.
 5. A single-tenant building may combine the square footage total of both the storefront orientation and the general building orientation flat signs to construct 1 larger sign.
 6. See subsection B4a of this section.
 7. Public property lease and insurance required for projection over property line.
4. Supplementary Regulations:
- a. Lot Frontage Requirements: A minimum lot frontage of one hundred feet (100') shall be required for pole signs or monument signs.

Section 14: Amending 21A.46.110.C.3 by adding “Projecting Business Storefront Sign” to the table of permitted signs.

3. Sign Type, Size And Height Standards:

STANDARDS FOR THE D-3 DISTRICT

Types Of Signs Permitted	Maximum Area Per Sign Face	Maximum Height Of Freestanding Signs ¹	Minimum Setback ²	Number Of Signs Permitted Per Sign Type	Limit On Combined Number Of Signs ³
Awning/canopy signs	1 square foot per linear foot of storefront (sign area only)	See note 1	May extend 6 feet from face of building 2 feet from back of curb ⁶	1 per first floor door/window	None
Canopy, drive-through	40% of canopy face if signage is on 2 faces; 20% of canopy face if signs are on 4 faces	See note 1	n/a	1 per canopy face	None
Construction sign	64 square feet	12 feet	5 feet	2 per building	None
Flat sign (storefront orientation) ⁴	1.5 square feet per linear foot of store frontage ⁵	See note 1	n/a	1 per business or storefront	None
Monument and pole signs:					
Monument sign	100 square feet	12 feet	None	1 per street frontage	1 sign per street frontage

Pole sign	75 square feet for a single business; 100 square feet for multiple businesses	25 feet	None, but shall not extend across a property line	1 per street frontage	1 sign per street frontage
Nameplate, building	3 square feet	8 square feet	n/a	1 per building	None
New development sign	80 square feet	12 feet	5 feet	1 per development	None
<u>Pole sign</u>	<u>75 square feet for a single business; 100 square feet for multiple businesses</u>	<u>25 feet</u>	<u>None, but shall not extend across a property line</u>	<u>1 per street frontage</u>	<u>1 sign per street frontage</u>
Political sign	32 square feet	8 feet	5 feet	No limit	None
Private directional sign	8 square feet	4 feet	5 feet	No limit	None
<u>Projecting Business Storefront Sign</u>	<u>6 square feet per sign side; total of 12 square feet</u>	<u>NA</u>	<u>May extend 4 feet from face of the building but no closer than 2 feet to the back of curb. Minimum height of 8 feet above sidewalk.⁶</u>	<u>1 per leasable space or entry.</u>	<u>None</u>
Public safety sign	8 square feet	6 feet	5 feet	No limit	None

Real estate sign	64 square feet	12 feet	5 feet	1 per building	None
Wall sign or flat sign (general building orientation)	1.5 square feet per linear foot of building face ⁵	See note 1	n/a	1 per building face	
Window sign	25% of total frontage window area per use	See note 1	n/a	No limit	None

Notes:

1. For height limits on building signs, see subsection [21A.46.070J](#) of this chapter.
2. Not applicable to temporary signs mounted as flat signs.
3. The total number of signs permitted from the sign types combined.
4. Storefront flat signs limited to locations on the lower 2 floors.
5. A single-tenant building may combine the square footage total of both the storefront orientation and the general building orientation flat signs to construct 1 larger sign.
6. Public property lease and insurance required for projection over property line.